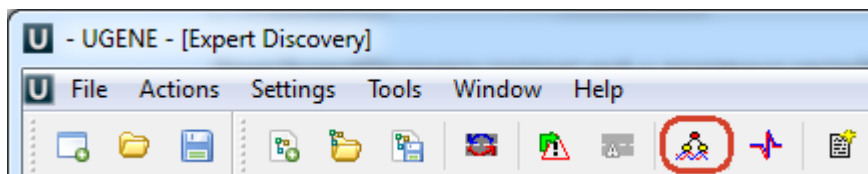
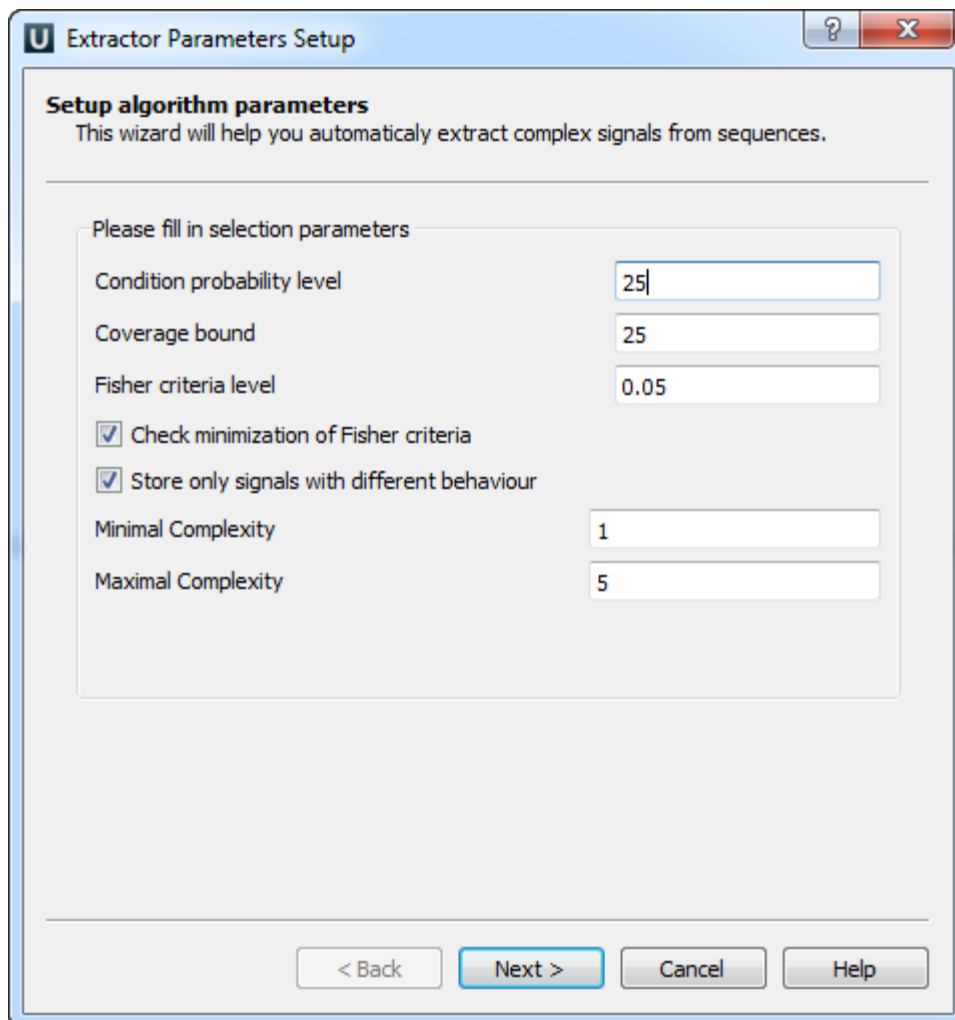


Generating Signals

Using the training set (positive and negative set, markups) the system can construct a structure of a regulatory region as *Complex Signal*. The extracting wizard is launched by the *Extract signals* button on the toolbar:



The following dialog will appear:



In the first dialog window extraction parameters (see below) are set. Next windows are for setting operations which will be nodes of CS and choosing a folder for CS storing.

To see CS location in a sequence it is needed to pick sequences for representation with the popup menu of the sequence. Then, one can choose any CS and it will be shown as autoannotations on each represented sequence. Moreover, it is possible to observe few signals at once on the sequence, for this, user checks signals for group representation with the popup menu. The same operation is used to choose signals for recognition.