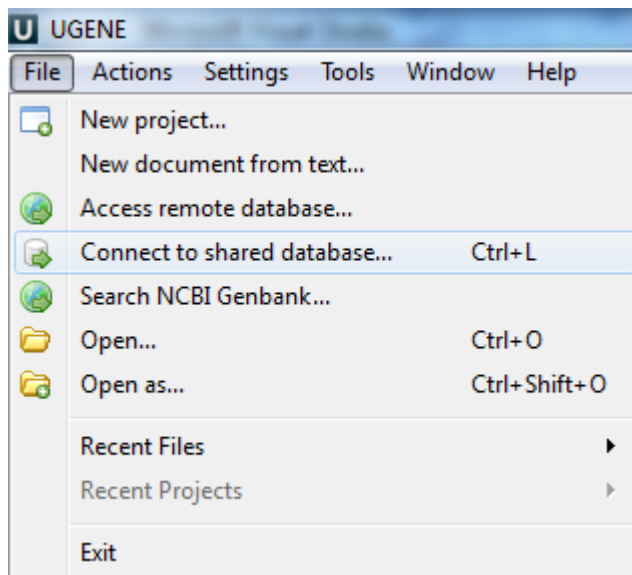


# UGENE Public Storage

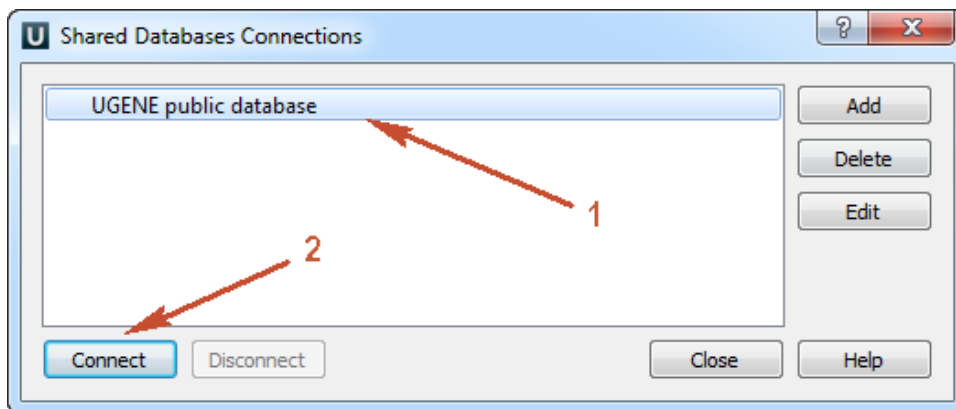
UGENE provides the free-to-use public bioinformatics data storage. This storage keeps DNA sequences of several popular genomes such as human, mouse, drosophila melanogaster, etc. and hundreds of plasmid sequences.

Follow the instructions for accessing the storage:

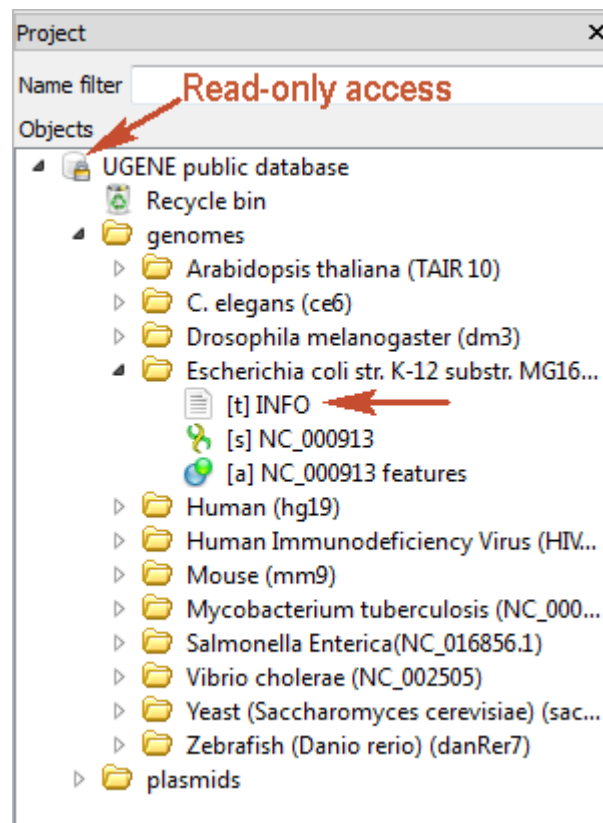
1. Use the menu *File* -> *Connect to shared database* (or press the *Ctrl+L* shortcut).




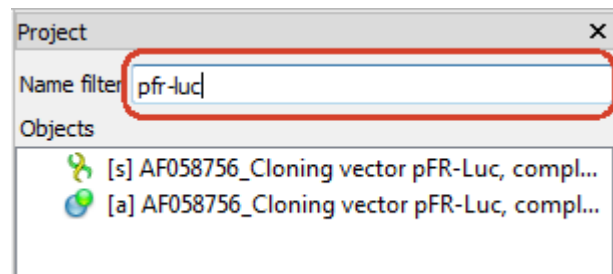
2. Choose the predefined "UGENE public database" item and click the *Connect* button.



3. Browse the storage content.



- The storage document is marked with the lock icon . It means that the storage provides the read-only access. Any data modifications are unavailable for such type of access (importing, removing or replacing of data).
- Each genome folder contains the *INFO* text object. It is the information about the genome or its source.
- You can [export](#) the data to your computer for working with the data locally.
- There are hundreds of plasmids in the storage. Use the name filter for fast navigating and searching an interesting plasmid:



The list of available genomes:

- Human (hg19)
- Mouse (mm9)
- Arabidopsis thaliana (TAIR 10)
- C. elegans (ce6)
- Drosophila melanogaster (dm3)
- Escherichia coli str. K-12 substr. MG1655 K12(NC\_000913.3)
- Human Immunodeficiency Virus (HIV-2)
- Mycobacterium tuberculosis (NC\_000962.3)
- Salmonella Enterica(NC\_016856.1)
- Vibrio cholerae (NC\_002505)
- Yeast (Saccharomyces cerevisiae)(sacCer3)
- Zebrafish (Danio rerio) (danRer7)