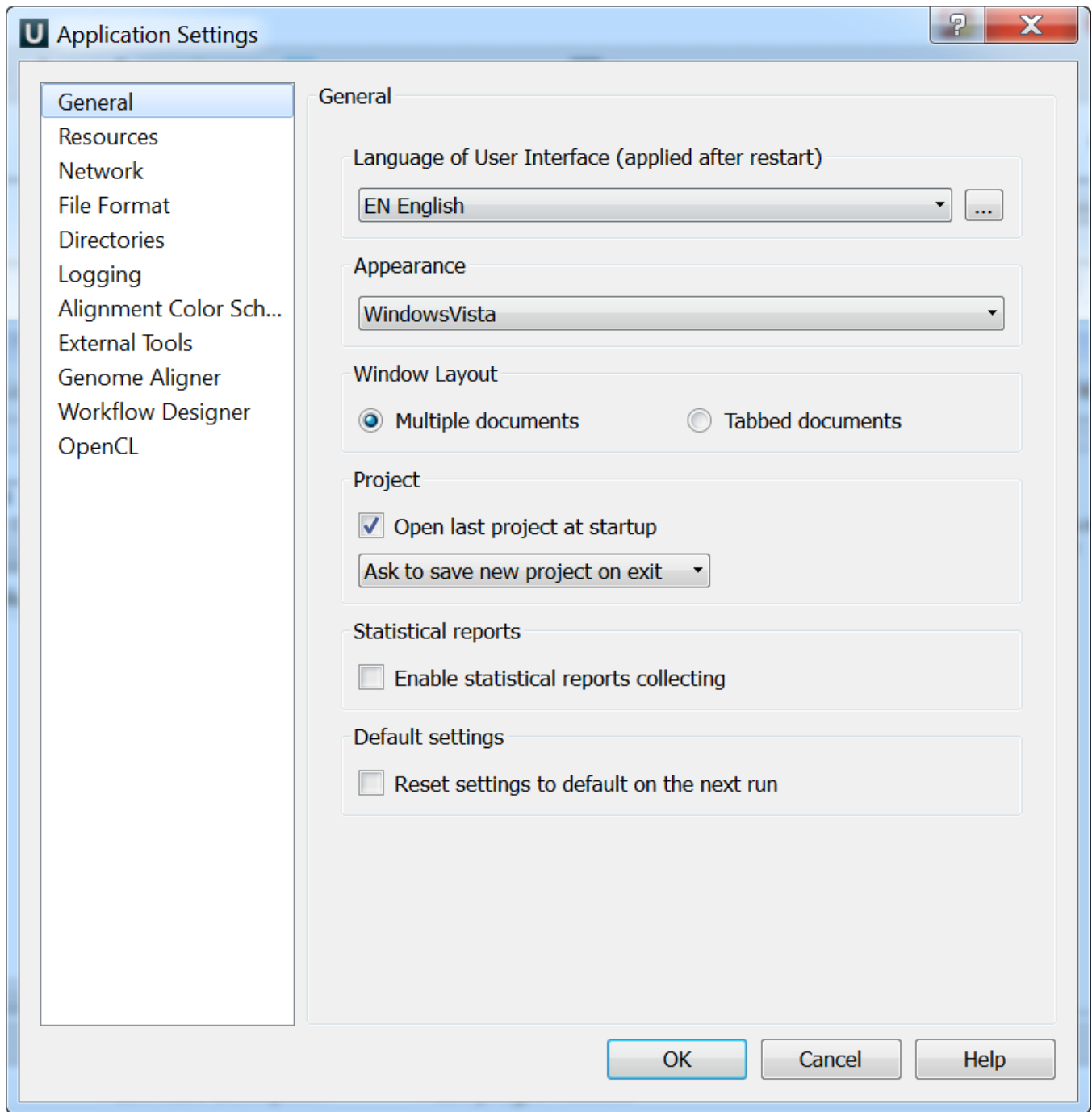


General



The following settings are available on the tab:

Language of User Interface (applied after restart) — here you can select UGENE localization. Currently available localizations are EN, RU, CS and ZH. The default value (*Autodetection*) specifies that UGENE should use the operating system regional options to select the localization. This setting is applied only after UGENE is reopened.

Appearance — defines the appearance of the application.

Window Layout — this option allows to control the behavior of windows, multiple or tabs.

Open last project at startup — if the option is checked, the last project is opened when UGENE is started. Also you can choose default settings for saving project.

Enable statistical reports collecting — collects information about UGENE usage and sends it to the UGENE team to help improve the application.



The collected information includes:

1. System info: UGENE version, OS name, Qt version, etc.
2. Counters info: number of launches of certain tasks (e.g. HMM search, MUSCLE align).

The collected information DOESN'T include any personal data.

Reset settings to default on the next run — this option resets settings to default on the next run.