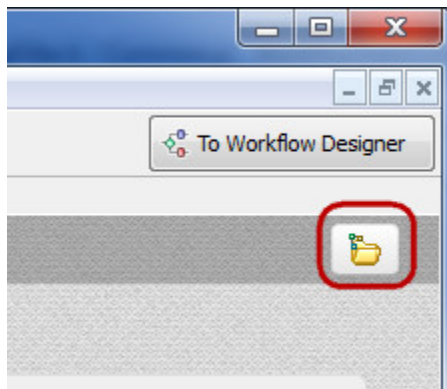
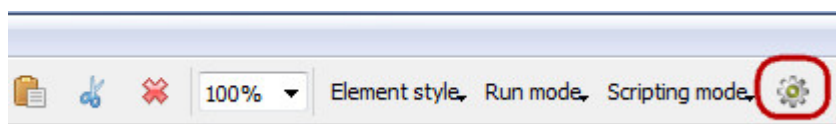


Using Dashboard

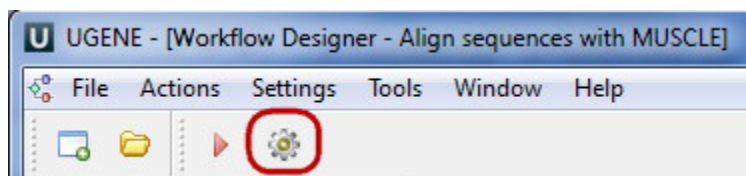
For each workflow which has been run new dashboard will be opened. This dashboards will be saved in the [selected directory](#). Also you will see this dashboard after UGENE will be runned again. Furthermore you can open the original workflow for your results by clicking on this button:



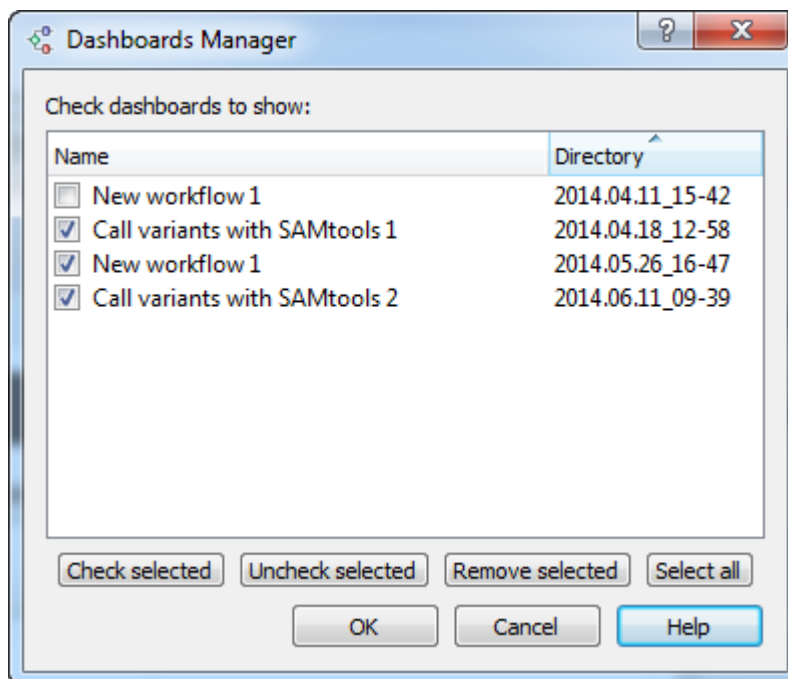
To remove or to load a dashboard click to the *Dashboards manager* button on the *Workflow Designer* main toolbar:



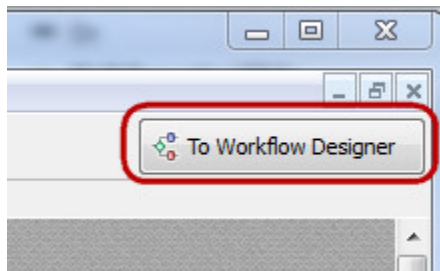
or on the *Dashboard* toolbar:



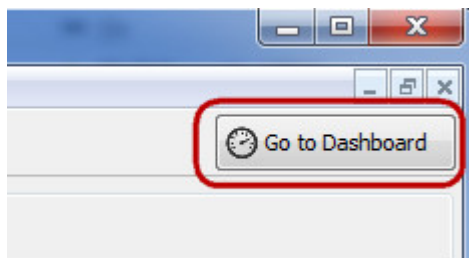
The following dialog appears:



To see a dashboard select it and check it's checkbox. To remove a dashboard select it and click the *Remove selected* button. Click OK button. The selected and checked dashboards appears in the *Dashboard* main window. You can go back to the *Workflow Designer* main window from *Dashboard* window by clicking on this button:



And go back to the *Dashboard* main window from *Workflow Designer* main window by clicking on this button:



To rename a dashboard tab use the following context menu:

