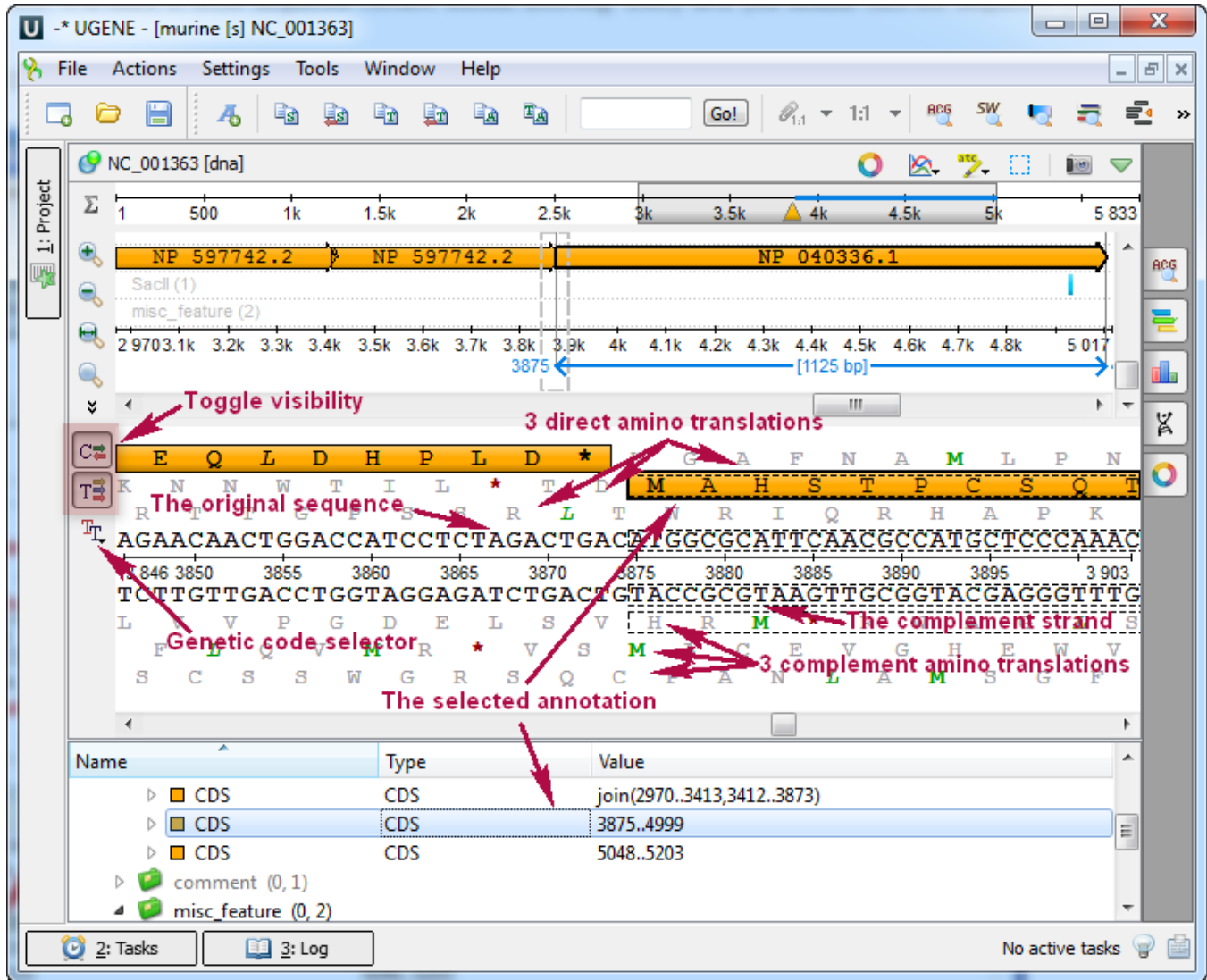


Sequence Details View

The *Sequence details view* is a supplementary component of the *Sequence overview*. It is used to show sequence content without zooming. Every time you double click the sequence in the *Sequence overview* area or select an annotation, the corresponding sequence position is made visible in the *Sequence details view*.

For a DNA sequence the *Sequence details view* automatically shows complement DNA strand and 6 amino translation frames.



See also:

- [Navigating the Sequence details view using the Sequence overview](#)
- [Selecting Amino Translation](#)
- [Showing and Hiding Translations](#)