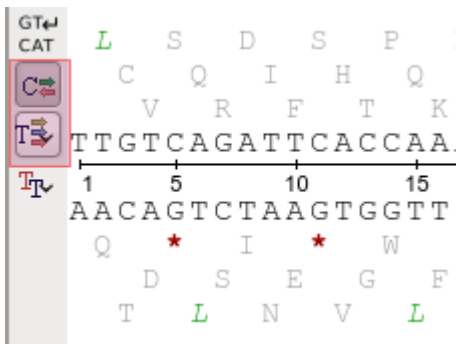


# Showing and Hiding Translations

You can turn on/off the direct and complement amino translations visualization in the *Sequence details* view using the *Show complement strand* and the *Show/hide amino acid translations* buttons.



To select a translation frames use the *Show/hide amino acid translations* button:

A screenshot of the 'Show/hide amino acid translations' menu. The menu is open, showing options for displaying translations. The 'Show/hide translations' option is checked. Below it, there are three options: 'Show direct only', 'Show complementary only', and 'Show all'. Further down, there are checkboxes for '1 direct translation frame', '2 direct translation frame', '3 direct translation frame', '1 complementary translation frame', '2 complementary translation frame', and '3 complementary translation frame'. All these options are checked. The background shows a partial view of the sequence viewer interface.