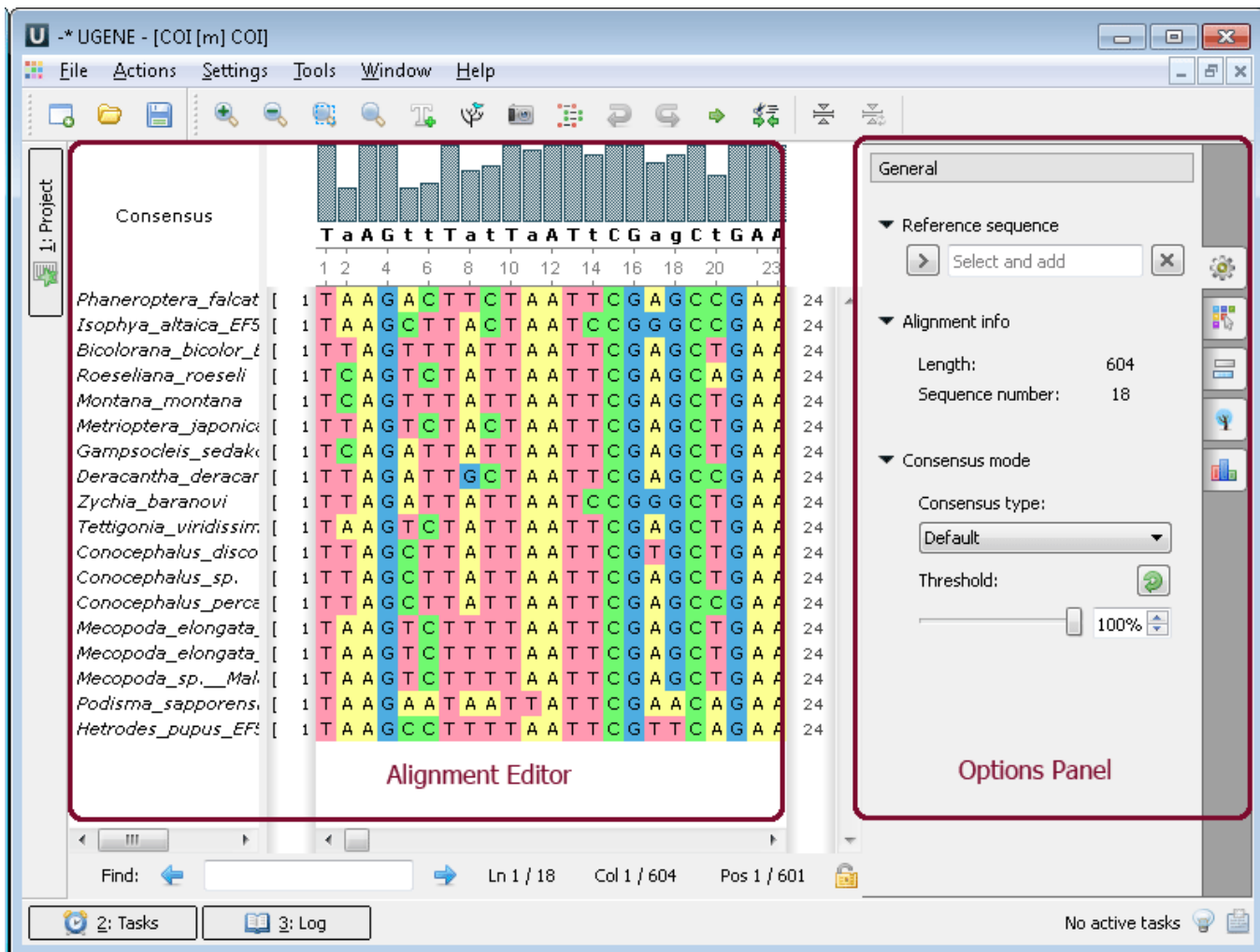


# View, edit and align multiple sequence alignments

**Multiple sequence alignment (MSA Editor).** The *Alignment Editor* is a powerful tool for visualization and editing DNA, RNA or protein multiple sequence alignments. To activate the *Alignment Editor* open any alignment file. For example you can use the `$ugene/data/samples/CLUSTALW/COI.aln` file provided with UGENE. After opening the file in UGENE the *Alignment Editor* window appears:



The editor supports different multiple sequence alignment (MSA) formats, such as ClustalW, MSF and Stockholm. The editor provides interactive visual representation which includes:

- Navigation through an alignment;
- Optional coloring schemes (for example Clustal, Jalview like, etc.);
- Flexible zooming for large alignments;
- Export publication-ready images of alignment;
- Several consensus calculation algorithms.

Using the *Alignment Editor* you can:

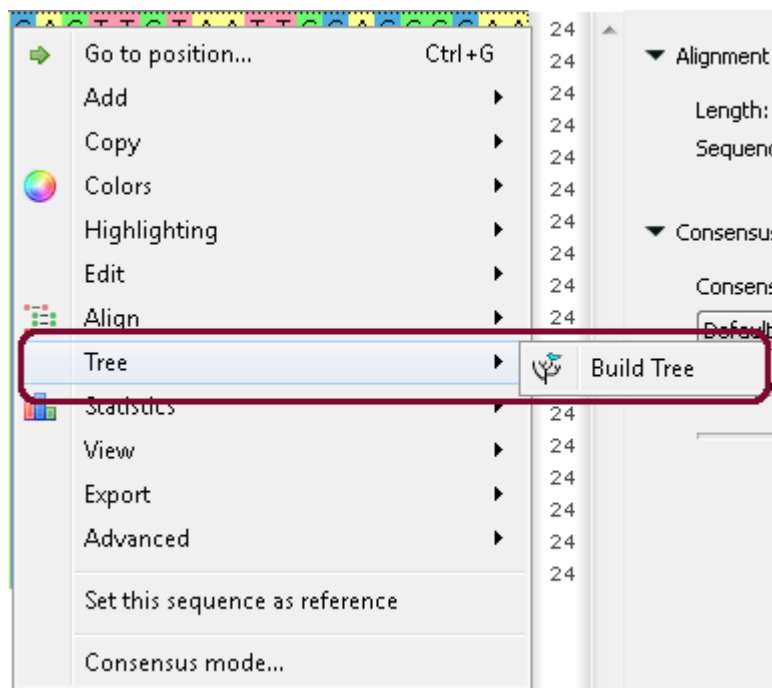
- Perform multiple sequence alignment using integrated MUSCLE and KAlign algorithms;
- Edit an alignment: delete/copy/paste symbols, sequences and subalignments;
- Build phylogenetic trees;
- Generate grid profiles;
- Build Hidden Markov Model profiles to use with HMM2/HMM3 tools.

**Example 2:** Build a tree from your alignment. You can do this by three different ways:

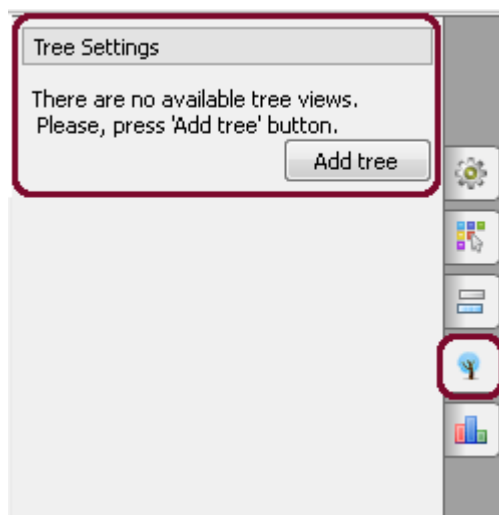
a. From the toolbar. Click to the tree icon:



b. From the context menu:



c. From the Options Panel:



After calculation the tree appears in the MSA Editor in a separate window:

