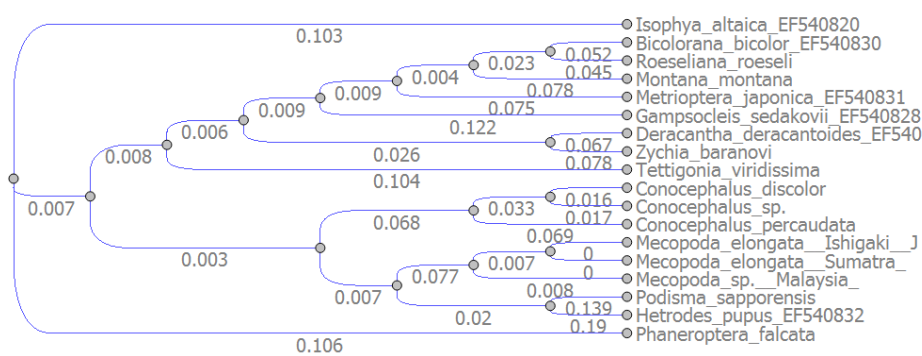


Adjusting Tree nodes

Node shapes and Tip shapes are unselected by default in the *Tree settings Options Panel*.



Page: 1/1

Color:

Font: MS Shell Dlg 2

Size: 12

Attributes: **B** *I* U

▼ Branches

Expansion:

Curvature:

Color:

Line width: 1

▼ Nodes

☒ Node shapes

☒ Tip shapes

Selection *Node shapes* option draws circles on all internal nodes.
Selection *Tip shapes* option draws circles on all end nodes on the right.